

EDUCATIONAL FACILITIES

# DISASTER PREVENTION & EDUCATION CENTER

ISTANBUL - TURKEY

Owner / Client : MUNICIPALITY OF ISTANBUL  
Developer/Client Representative : BIMTAS  
Architect : 109 ARCHITECTS International  
Mep Consultants : BEEMME OFFShore  
Mission : Electro – Mechanical Design & Supervision  
Project Area = 30.000m<sup>2</sup>  
MEP installation Cost : 10M.US\$  
Year : 2013 - 2014  
Location : ISTANBUL - TURKEY



## PROJECTS SPECIFICITY

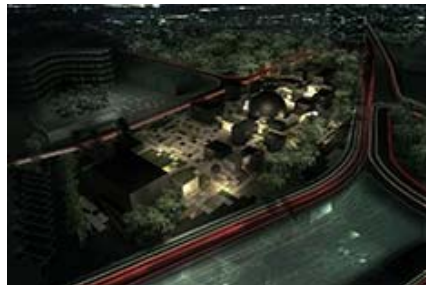
DISASTER PREVENTION AND EDUCATION CENTER THAT INCLUDES THE FOLLOWING :

- CINEMA
- ADMINISTRATION BUILDING
- AUDITORIUM
- CAFETERIA
- CHILDREN AREA
- EARTHQUAKE SIMULATION STAGE
- EMERGENCY COMMUNICATION
- EVALUATION STAGE
- FIRE PREVENTION GAME
- FIRE FIGHTING TRAINING
- FIRST AID TRAINING
- LIBRARY
- LIQUEFACTION
- MEDICAL ROOM
- ORIENTATION STAGE
- PLANETARIUM
- RAINSTORM SIMULATION
- SEMINAR
- SHELTER
- SMOKE MAZE ROOM
- CAR PARK FOR 500 CARS

## TECHNICAL DATA

A COMPLETE MEP SYSTEM DESIGN FOR HVAC, FIRE PROTECTION, PLUMBING SERVICES, POWER DISTRIBUTION, EMERGENCY POWER GENERATION, PUBLIC ADDRESS SYSTEMS, CCTV NETWORK, FIRE DETECTION SYSTEMS, etc...

ALL SYSTEMS ARE DESIGNED IN ACCORDANCE WITH THE LOCAL STANDARD AND COMMON PRACTICES, LOCAL CIVIL DEFENCE REQUIREMENTS AND INTERNATIONAL STANDARDS WHEN APPLICABLE



Antélias, Lebanon  
P.O. Box 70-1116

Tel : +961 4 523080  
Cel : +961 3 761066

barbanel@barbanel-me.com  
www.barbanel-me.com