

BANKS

BANQUE LIBANO - FRANCAISE

DISASTER RECOVERY BUILDING - GHAZIR

Owner / Client :Banque Libano - Francaise.
Developer/Client Representative :B.L.F
Architect :YTAA - Youssef Tohme Architects and Associates.
Design Cabinet :Barbanel - ME
Mission :Electro-mechanical (Design & Supervision)
Built up Area :8500 s.q.m
MEP installation Cost :7.6M.US\$
Year :2014 - Ongoing
Location :Ghazir - Lebanon



PROJECTS SPECIFICITY

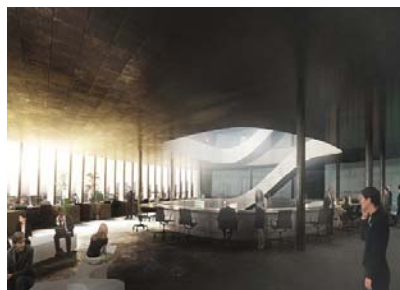
- Disaster Recovery Building for a Bank.
-Including a bank branch, a Tier III Data Center,
Offices, Carpark and all ancillary technical rooms.

TECHNICAL DATA

COMPLETE ELECTRO-MECHANICAL SYSTEM DESIGN INCLUDING ALL HVAC, PLUMBING(DRAINAGE and WATER SUPPLY), FIRE FIGHTING AND PROTECTION SYSTEMS, POWER SUPPLY, SECURITY AND ACCESS CONTROL, DETECTION SYSTEMS, CCTV, PUBLIC ADDRESS SYSTEMS etc....

MAIN FEATURES :

- 1-ALL OFFICES AND BANK BRANCH ARE PROVIDED WITH 3 PIPES VARIABLE REFRIGENT VOLUME AIR-CONDITIONING SYSTEMS.
- 2-ALL SPACES ARE PROVIDED WITH TREATED OUTSIDE AIR VIA DEDICATED 100% FRESH AIR AIR HANDLING UNITS.
- 3-DATA CENTER IS PROVIDED WITH DEDICATED CHILLERS AND COMPUTER ROOM AIR-CONDITIONERS TO ACHIEVE A TIER III CONCURRENTLY MAINTAINABLE SITE INFRASTRUCTURE IN ACCORDANCE WITH UPTIME INSTITUTE TIER CLASSIFICATION.
- 4-ALL NECESSARY EMERGENCY AND STANDBY POWER GENERATORS AND UPS WITH ALL RELEVANT SYSTEMS NEEDED FOR THE BUILDING AND THE DATA CENTER.
- 5-VENTILATION FOR THE CAR PARK AND FOR ALL OTHER ANCILLARY AND TECHNICAL ROOMS.



Antélias, Lebanon
P.O. Box 70-1116

Tel : +961 4 523080
Cel : +961 3 761066

barbanel@barbanel-me.com
www.barbanel-me.com